

The background features a close-up of vibrant green leaves with prominent veins, some of which are positioned as if they have just touched a surface of water. This creates a series of concentric, dark-toned ripples that spread outwards from a central point, set against a warm, golden-yellow background. The overall composition is serene and natural.

STRATEGIC BEGINNINGS:
Worldview

*Peacocke
&
Wilson*

Table of Contents:

GoStrategic & SLT Bios.....3

Lesson 1: Introducing Worldview.....5

Lesson 2: Presuppositional Worldview.....13

Lesson 3: Evidential Worldview21

Lesson 4: Applying Worldview.....29

Lesson 5: Measuring Worldview37

Lesson 6: Paradigms45

Lesson 7: Worldview & Government53

Lesson 8: Embracing a New Perspective of Christian Worldview.....61



GoStrategic
1221 Farmers Lane
Suite E, Santa Rosa, CA 95405
800-700-0605 | 707-578-7700
info@gostrategic.org

GoStrategic (formerly Strategic Christian Services)

Founded in 1979 by Dennis Peacocke who serves as President, GoStrategic is a prophetic ministry committed to training and equipping leaders of every cultural sphere in discipling nations and transforming the world. GoStrategic operates internationally, educating Christians through our Business Leadership School and Strategic Life Training correspondence schools, events, educational products, networking, and consulting services. Our ministry headquarters are based in Santa Rosa, California, with affiliates and schools in Mexico, Central and South America, Europe, Asia, and New Zealand.

GoStrategic equips believers to be leaders in the communities where they live, work, and serve. We specialize in bridging the gap between spiritual truth and the practical implementation of those truths in confronting real-world problems. With over three decades of experience educating, modeling, and connecting like-minded individuals, we have seen first-hand the fruit of Christians applying Biblical principles to the most complex challenges. It is our sincere hope that the services we provide result in thousands of communities transformed as believers step in to rebuild, repair, and restore our world. To learn more, please visit our website: www.gostrategic.org

Copyright © GoStrategic 2013



Strategic Life Training (SLT)

Strategic Life Training began in the home of Dennis Peacocke in the 1980s with a vision to equip his children with tools that would help prepare them to be leaders in their generation. In 1991, this family exercise became what is now called Strategic Life Training and has developed into a course that has touched lives in the United States, Canada, New Zealand, Australia, and all over Europe, and serves to develop emerging leaders of all ages.

Since its inception 20 years ago, SLT has made a significant impact. Those who have participated in our programs are affecting their schools, universities, churches, places of work, as well as the larger culture through extra-local ministries, the media, public policy think tanks, and more. Our expectation is that this influence will continue to increase.

Strategic Life Training has proven itself an invaluable tool for those who believe God has called them for a purpose and want to identify and be trained to fulfill it. If you would like more information on how you can participate in this vision, please visit the SLT website: www.strategiclifetraining.com

“Introducing Worldview” Lesson #1

case study

You and a friend watch a movie where the main character often refers to the “code” by which he lives. After the movie you ask your friend if she has a “code” by which she lives...”. Your friend replies by saying, “I don’t really base my decisions on any particular philosophy for life. I simply make decisions day-to-day depending on what seems best for me at the time.”

questions

1. How will you reply to your friends comment?
2. Why do you think it is important to be conscious of the things that you believe?

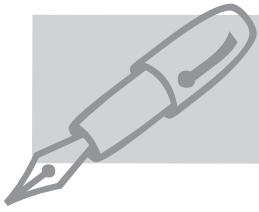


LESSON FOCUS

THIS LESSON WILL FOCUS ON THE REALITY THAT PEOPLE VIEW LIFE THROUGH A FRAMEWORK OF HEART BELIEFS. THESE BELIEFS FORM THE FOUNDATION OF THEIR WORLDVIEW.

This lesson is important because...

The subconscious assumptions that make up our worldview are the most significant influences in our lives. It is these assumptions that will determine the degree of influence that all other things have on us.



notes...

“Introducing Worldview”

Lesson #1

- I. John 3:19-21
 - A. The goal of this series is that you would come to a place of loving the light.
 - B. Joey story—The example of applying worldview.
 - C. We live in a culture that wants to undercut our beliefs.

- II. The greatest influence in our lives is our heart beliefs.
 - A. We make these decisions either consciously or sub-consciously.
 - B. Everyone puts their faith in something. The question is, “In what have you put your faith?”
 - C. Our faith choices determine the degree of influence of all other things in our lives.

- III. Worldview deals with the way we see the world and every individual aspect of it.
 - A. We put our confidence in “Experts” that give us evidence for our heart beliefs.
 - B. All of us view life through a worldview lens.
 - C. Our worldview determines the scope of our reality.
 - 1. The four philosophical questions.

ABOUT THE SPEAKER

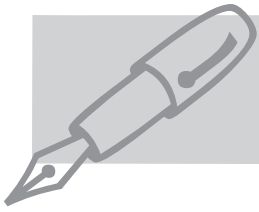
ADAM PEACOCKE

is the pastor of City Life Fellowship and serves on the advisory board of Strategic Life Training. He has a degree in history from UCLA. Adam resides in Santa Rosa, CA with his wife, Joanne, and their four children.



make
your case

Why is it risky to go through life ignorant of the things you believe at the most basic level?



notes...

“Introducing Worldview” Lesson #1

- IV. We are all on a worldview journey.
- A. We begin the journey as those who are influenced.
 - 1. We are all born with a lens (the lens of fallen human nature).
 - 2. Most people never move beyond being influenced.
 - B. The second phase in the worldview journey is where we are intercepted (by the gospel).
 - 1. The lens of our fallen human nature is replaced with the lens of Christ.
 - 2. Only God can intercept us in this way.
 - 3. Even as Christians, we can often continue to be influenced by others who look through another lens.
 - C. The third phase in the worldview journey is becoming integrated.
 - 1. “Be transformed by the renewing of your mind...” (Romans 12:2)
 - 2. We need to learn how to think according to biblical principles.


define a term

WORLDVIEW

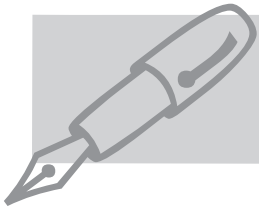
A Worldview is a set of assumptions which are held (consciously or subconsciously) about the basic make-up of the world.

—The Universe Next Door
(James Sire)

link to a past lesson



God wants our
mind as well as
our heart.



notes...

“Introducing Worldview” Lesson #1

- D. The final phase in the worldview journey is to become an influencer.
 - 1. This is not a defensive position (Matthew 28:18-20).
 - 2. Paul was a great influencer (1 Corinthians 9:19-23).
 - 3. God wants us to be a weapon for Him in the war of the worldviews.

V. The Worldview battle is fought on three levels.

- A. The presuppositional level (heart)
- B. The evidential level (mind)
- C. The applicational level (actions)

listen
to learn

Identify the four steps in the worldview journey.

principle
endeavours

Our goal is to move from those who are merely integrated in our worldview to influencing those around us.



ASSIGNMENT SECTION

“Introducing Worldview” Lesson #1

listening test

1. Everbody lives either by design or _____.
2. You do not have a worldview until you consciously choose what you believe. • TRUE or FALSE
3. We all put our faith in _____ that give us evidence for our beliefs.
4. Christians are the only ones who live by faith. • TRUE or FALSE
5. The most significant influence in our lives is the media. • TRUE or FALSE

Question #1:

Identify in which phase of the worldview journey you are. What will you do in order to move to the next phase?

Question #2:

In your own words, define the term “worldview.”

make it real - exercise

Make a list of your most basic beliefs about God, people, and truth, and consider why you believe these things to be true. Consider where some of the gaps might be in your understanding.

Question #3:

What do we mean when we say that our presuppositions are beliefs that cannot be empirically proven?

memory verse

“And do not be conformed to this world, but be transformed by the renewing of your mind, that you may prove what is that good and acceptable and perfect will of God.”

— Romans 12:2 (NKJV)

Question #4:

Why do you suppose the majority of Christians have not been taught to think according to their heart assumptions?

“Presuppositional Worldview”

Lesson #2

case study

You have been asked to present a short speech to a Social Sciences class addressing the root issues involved in the rise of school violence in this country. You are to include at least two suggestions as to how further incidents might be avoided.

questions

1. Write a short paragraph outlining your thoughts about what you would share if you were giving this speech.
2. What might be some related issues worth considering in this speech?

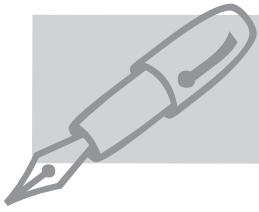


LESSON FOCUS

THIS LESSON WILL FOCUS ON THE FIRST LEVEL OF WORLDVIEW AWARENESS, THE PRESUPPOSITIONAL LEVEL. IN IT WE WILL DEVELOP HOW WORLDVIEW BEGINS IN THE HEART.

This lesson is important because...

Without an understanding of presuppositional thinking, it is impossible to have a well-thought-through worldview.



notes...

“Presuppositional Worldview”

Lesson #2

- I. Our worldview is made up of basic assumptions called presuppositions.

- II. Everyone lives by faith (Galatians 2:20; Hebrews 11:1)
 - A. Faith requires putting your trust in something.

- III. Presuppositions are decisions of the heart (John 3:19-21).
 - A. Those who love the light are committed to truth “against themselves.”
 - B. Those who love darkness are committed to an autonomous lifestyle.
 - C. The mind justifies what the heart has chosen.

- IV. We put our faith in something as the measure of fact or fiction in our lives.
 - A. We need to build our life on a solid foundation (Matthew 7:24).
 - B. What are some of the things in which we put our faith? The “Experts.”
 - 1. Experience
 - 2. Observation (empiricism)
 - 3. Reason

ABOUT THE SPEAKER

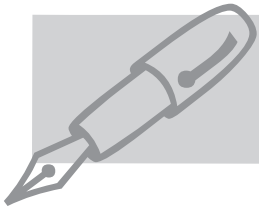
MARK WILSON is the former assistant director of Strategic Life Train-



ing, a ministry designed to train young Christians to lead their generation. He has a degree in history and a degree in law from The University of Auckland, New Zealand. Mark currently works in real estate and resides in New Zealand with his wife, Emma, and their two children.

make
your case

Is it true that the heart determines how you think as much as it determines what you love?



notes...

“Presuppositional Worldview”

Lesson #2

4. Experts
5. Tradition
6. Revelation (The Word of God)

V. Our worldview determines the scope of our reality.

- A. No one is neutral in the way they interpret information in the world.
- B. No one is neutral in the way they present information to the others.

VI. Our beliefs come back to one of the three “root” presuppositions.

- A. The nature of God
- B. The nature of man
- C. The nature of truth

VII. Some worldviews are built around systems of thought. We call these worldviews ideologies.

- A. An ideology is an organized belief system made up of a comprehensive set of presuppositions.
- B. All modern cultures are built upon ideologies.


define a term

JUSTIFY

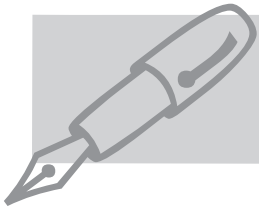
To prove or show to be just, or conformable to law, right, justice, propriety or duty; to defend or maintain; to vindicate as right.

(Webster’s 1828)

link to a past lesson



Everyone lives
by faith.



notes...

“Presuppositional Worldview”

Lesson #2

VIII. Why is it important that we have an understanding of worldview and presuppositional thinking? It allows us to apply biblical thinking to new issues.

- A. It allows us to remain firm in our beliefs.
- B. 2 Corinthian 10:3-5; We have a responsibility to expose ungodly ideas.
- C. Ideas have consequences.
- D. Allows us to live by design—“conscious” and “consistent”

IX. Presuppositional thinking is a skill. It enables you to get to the heart (root) of an issue.

X. Worldview is not just about defending the faith; it is about living and demonstrating the faith.

listen to learn

Upon which of the “Experts” do people most readily rely to measure truth in the culture today?

principle endeavours

2 Corinthians 10:3-5

We are called to expose the false beliefs that keep people in deception.



ASSIGNMENT SECTION

“Presuppositional Worldview” Lesson #2

listening test

1. The predominant worldview in the culture today is _____.
2. Presuppositions form the foundations of all ideologies. • TRUE or FALSE
3. In our modern society the value of people is primarily based on their _____.
4. Christians are the only people who live life by faith. • TRUE or FALSE
5. The _____ justifies what the heart has chosen.

make it real - exercise

Look at the editorial page of a newspaper and practice identifying the presuppositions of the writers in regard to the nature of God, the nature of man, and the nature of truth.

memory verse

“And this is the condemnation, that the light has come into the world, and men loved darkness rather than light, because their deeds were evil. For everyone practicing evil hates the light and does not come to the light, lest his deeds should be exposed. But he who does the truth comes to the light, that his deeds may be clearly seen, that they have been done in God.” —2 Timothy 3:16 (NKJV)

Question #1:

In your own words, explain what a presupposition is and give two examples.

Question #2:

Upon Which of the “Experts” discussed in this teaching have you relied the most to measure reality in life?

Question #3:

Explain the meaning of the phrase: the mind justifies what the heart has chosen.

Question #4:

What non-Christian group of people are you aware of who know what they believe at a presuppositional level, and are very conscious of spreading their worldview?

“Evidential Worldview”

Lesson #3

case study

During a conversation with one of your Christian friends, he reveals to you that he believes God created the world through evolution. “After all, it seems to make sense. There is a lot of evidence for evolution, and God could have created things that way. I think He just got things started, and then let the laws of nature finish things off.”

questions

1. What would you say to your friend?
2. Identify some of the reasons a Christian might hold such a perspective.

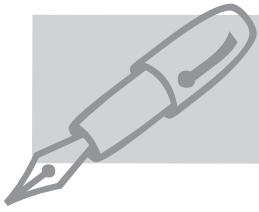


LESSON FOCUS

THIS LESSON WILL FOCUS ON THE SECOND LEVEL OF WORLDVIEW AWARENESS, THE MIND. IN IT WE WILL FOCUS ON THE PROOFS AND EVIDENCES WE CAN LOOK TO THAT SUPPORT OUR HEART BELIEFS.

This lesson is important because...

Without a clear understanding of how the Christian worldview addresses the major questions of life, we will be ineffective in challenging the hearts and minds of men and women in our culture.



notes...

“Evidential Worldview”

Lesson #3

- I. We are called to defend the faith (1 Peter 3:15).
 - A. The word “apologetics” is derived from the Greek word *apologia* meaning to give a defense or vindication for what we believe.
 - B. We need to be prepared to give an answer.
 - C. We are defending “the hope” we have in Jesus Christ.
 - D. We are all called to be ready to give an answer for the hope that we have. The example of Jesus (Mark 2:1-12).

- II. There is a distinction between convincing and conviction.
 - A. Convincing takes place at the head level and cannot produce lasting change.
 - B. Conviction takes place at the heart level and paves the way for genuine transformation.
 - C. The role of the Holy Spirit in bringing conviction (John 16:8-15).
 - D. We must learn how to work with the Holy Spirit in the process of conviction.

ABOUT THE SPEAKER

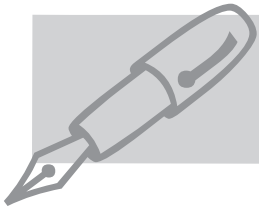
MARK WILSON is the former assistant director of Strategic Life Train-



ing, a ministry designed to train young Christians to lead their generation. He has a degree in history and a degree in law from The University of Auckland, New Zealand. Mark currently works in real estate and resides in New Zealand with his wife, Emma, and their two children.

make
your case

How might you alter your priorities that the Word of God would take its rightful place in your devotional life?



notes...

“Evidential Worldview” Lesson #3

III. Proverbs 26:4-5

- A. Verse 4—don’t enter the discussion using another’s presuppositions as the basis for the debate.
- B. Verse 5—We should confront people with the truth based on another set of assumptions.

IV. The example of Paul preaching in both the synagogue and the marketplace (Acts 17).

- A. The truths of God are not intended for Christians alone (Mark 4:4).
- B. The truth of God shows itself superior to any alternative worldview.

V. God has given man many evidences that point to His existence.

- A. God has revealed Himself in the creation (Romans 1:18-23).
- B. God has revealed Himself in history.
- C. God has made Himself known via the specific revelation of the scriptures.
- D. God has revealed Himself completely in the person of Jesus Christ.


define a term

PANTHEISM

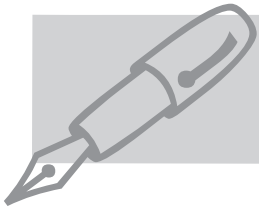
The doctrine that God is not a personality, but that all laws, forces, manifestations of the self-existing universe are God.

(Webster’s 1828)

link to a past lesson



The mind justifies
what the heart
has chosen.



notes...

“Evidential Worldview”

Lesson #3

VI. God has put within man an innate desire to learn and know.

- A. The components of an integrated worldview.
- B. The four basic philosophical questions.
 - 1. The ontological question.
 - 2. The epistemological question.
 - 3. The axiological question.
 - 4. The teleological question.
- C. The question of origins—explanations for how the universe came into existence.
 - 1. Something came from nothing.
 - 2. Impersonal beginning—naturalism and pantheism.
 - 3. Personal beginning—polytheism and theism.

VII. The role of the Christian worldview in the Modern Scientific Revolution.

VIII. We must engage people with “gentleness” and “respect” (1 Peter 3:15).

listen
to learn

Why is polytheism not a convincing answer to the question of origins?

principle
endeavours

Don't underestimate the value of your personal testimony as evidence of the reality of God.



ASSIGNMENT SECTION

“Evidential Worldview” Lesson #3

listening test

1. The theme throughout the Word of God is _____.
2. If you are reading the Bible without a desire to know Jesus, you are missing the point.
 - TRUE or FALSE
3. The Word brings _____ and eliminates _____.
4. Reading the Word is essential for change to take place.
 - TRUE or FALSE

make it real - exercise

Take some time to consider how you might better approach your reading of the Word in order to get the most out of the time spent. How will you decide where you will read? When will you read? Who can help you where you do not understand what you read?

memory verse

“All Scripture is given by inspiration of God, and is profitable for doctrine, for reproof, for correction, for instruction in righteousness, that the man of God may be complete, thoroughly equipped for every good work.” —2 Timothy 3:16 (NKJV)

Question #1:

What should our first focus be when reading the Bible? Why?

Question #2:

Why are the principles of the Bible important? Give an example from your own life to support your answer.

Question #3:

Explain one way in which the Bible is a “compass” in our lives.

Question #4:

What does it mean when we say the Word of God is understandable through obedience? Give an example from your own life to support your answer.

“Applying Worldview”

Lesson #4

case study

You meet an old friend whom you knew when you were a child. He knew your family went to church and asks if you are still “religious.” He points to a Darwin Fish (bumper sticker) attached to the back of his truck and makes the comment that he doesn’t believe in any of that faith stuff.

questions

1. What questions might you ask your friend so as to expose his “faith” assumptions?
2. What would be the manner in which you would engage your friend? Why is this important?

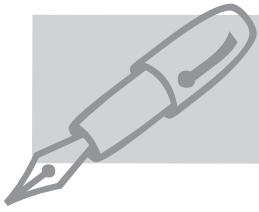


LESSON FOCUS

THIS LESSON WILL FOCUS ON THE THIRD LEVEL OF WORLDVIEW AWARENESS, THE APPLICATION LEVEL. WE WILL LOOK AT THE IMPACT OUR WORLDVIEW HAS ON OUR RELATIONSHIPS AND EVERY DAY ACTIVITIES.

This lesson is important because...

The study of Christian worldview is more than simply an intellectual exercise. It is about a life demonstrated. Our worldview must transition from our hearts and minds to our lifestyle in the way we relate to the world around us.



notes...

“Applying Worldview”

Lesson #4

I. The goal of these lessons are not to produce experts in worldview, but to introduce you to the fundamentals of worldview.

II. Proverbs 23:6-7

- A. Our heart choices will manifest themselves in our lives.
- B. Ideas have consequences.
- C. We are dealing with three levels of worldview

III. The applicational level deals with tangible expressions of worldview.

- A. People see in our actions and attitudes a reflection of our heart assumptions.
- B. It was the application of Daniel’s worldview that his enemies targeted.

IV. Your application of worldview is determined by where you are in the worldview journey.

- A. It is at the application level that you most clearly see the dual life of those who have only been intercepted.

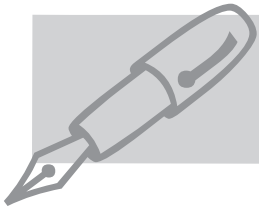
ABOUT THE SPEAKER

ADAM PEACOCKE is the pastor of City Life Fellowship and serves on the advisory board of Strategic Life Training. He has a degree in history from UCLA. Adam resides in Santa Rosa, CA with his wife, Joanne, and their four children.



make
your case

People don't care how much you know until they know how much you care.



notes...

“Applying Worldview”

Lesson #4

- B. If you are integrated in your worldview you will be one who lives by design.
- C. Those who move beyond the phase of being integrated will look for opportunities to influence.
 - 1. Under pressure, people revert to what they know.
 - 2. We are called to be salt and light to the people around us.

V. The application level of worldview challenges our character (1 Peter 3:15).

- A. Paul exhorts us to defend the hope that we have with “gentleness and reverence.”
- B. The distinction between right and righteousness.
- C. David bringing the Ark of God back from the Philistines.
- D. The importance of wisdom (Proverbs 1:8-9).
 - 1. Wisdom is other focused.
 - 2. We need to be skillful and wise in the way we apply worldview.

define a term

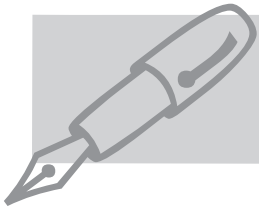
APPLY

to put to some practical or specific use; to concentrate on; to be appropriate, suitable, or relevant.

(Webster’s 1828)

link to a past lesson

Everyone lives by faith. The question is, faith in what?



notes...

“Applying Worldview”

Lesson #4

VI. There are three categories in which we make application of our worldview.

- A. Personal application: This is the place where you really test the integration of your worldview. Things to look out for are as follows:
 - 1. The confession of your mouth.
 - 2. The way you pray.
 - 3. We need to practice asking difficult questions.
- B. The relational level deals with the way we relate to people (Acts 17).
- C. The societal level deals with the impact of worldview on the culture.

listen to learn

What can we learn from the account of King David returning with the Ark of the Covenant?

principle endeavours

Our goal is not to convince people of the truth of the gospel but rather position them to receive revelation.



ASSIGNMENT SECTION

“Applying Worldview” Lesson #4

listening test

1. It was the _____ of Daniel’s worldview that his enemies targeted.
2. There have been many examples in history where believers have compromised in order to get out of pressure situations. • TRUE or FALSE
3. Jesus was a great example of _____ but not _____ in the way he responded to problems.
4. People’s attitudes and actions are an expression of their _____ assumptions.

Question #1:

Explain the statement that ideas have consequences.

Question #2:

Why are all three of the worldview levels important in effectively engaging the culture?

make it real - exercise

Process the things that are most important to you. What are some of the most difficult questions you are facing? Spend some time in prayer. Focus on how God wants you to apply what you believe until the answers become clear.

Question #3:

Explain the significance of the distinction between being right and being righteous.

memory verse

“Do not eat the bread of a miser, nor desire his delicacies; for as he thinks in his heart so is he.”

—Romans 1:20 (NKJV)

Question #4:

Give an example of how we might apply our worldview within each of the three categories mentioned in this lesson.

“Measuring Worldview”

Lesson #5

case study

You are participating in a group discussion with friends over lunch. Most of the group are young non-Christians. The subject of the conversation is what people want to do with their lives. A girl in the group makes a comment, “When my parents look back over their lives they have a lot of regrets.” She asks, “How can we know that our philosophy for life is one worth pursuing as we enter our adult years?”

questions

1. What advice would you give the group to help them assess the worth of their worldview?
2. What aspects of your testimony might be compelling to a non-believer who knows little about church?

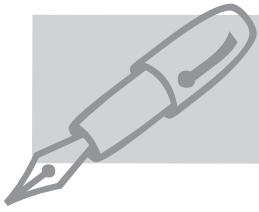


LESSON FOCUS

THIS LESSON WILL FOCUS ON THE COMPONENTS OF AN INTEGRATED WORLDVIEW. THESE COMPONENTS ALLOW US TO MEASURE AND IDENTIFY THE WORTH OF THE WORLDVIEWS SUBSCRIBED TO IN OUR CULTURE.

This lesson is important because...

Not all worldviews are of equal value. An understanding of the depth of the Christian worldview will give us confidence as we challenge those worldviews that are not worthy of a person's commitment.



notes...

“Measuring Worldview”

Lesson #5

I. How do you judge whether the worldview to which someone subscribes is legitimate?

II. Luke 14:25-35

- A. We need to have ears to hear.
- B. Becoming a disciple of Christ requires us to yield our mind as well as our time, energy, and relationships.
- C. Developing a Christian worldview is not an easy process and requires us to count the cost.

III. An integrated worldview must handle all of the data.

- A. It must be big enough in its scope that it leaves no piece missing.
 - 1. (Acts 28:1-10); The example of Paul on the Island of Malta.
 - 2. The Christian worldview is one that handles all the data. The Bible, in principle, addresses all areas of life.

ABOUT THE SPEAKER

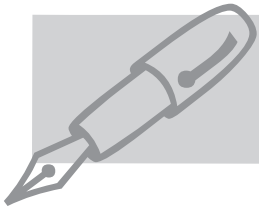
ADAM PEACOCKE is the pastor of City Life Fellowship and serves



on the advisory board of Strategic Life Training. He has a degree in history from UCLA. Adam resides in Santa Rosa, CA with his wife, Joanne, and their four children.

make
your case

In what way does the theory of evolution fail to handle all the data in explaining the origin of life?



notes...

“Measuring Worldview”

Lesson #5

B. There are important philosophical questions that all worldviews must address if a worldview is to handle all the data.

1. What is real?
2. How did we get here?
3. Where are we going?
4. What is of ultimate value?
5. How do we know what is true?
6. How do we change?
7. What happens when we die?

IV. An integrated worldview must be consistent within itself.


- A. The example of relativism—there are absolutely no absolutes.
- B. A worldview that is inconsistent is incapable of being integrated and, therefore, is vulnerable to influence.

define a term

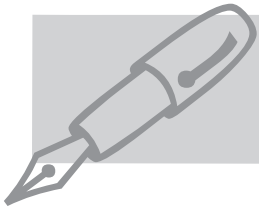
INTEGRATE

to make whole or complete by adding or bringing together parts; unify; to give or indicate the whole, sum, or total of.
(Webster’s 1828)

link to a past lesson



Living by design means to live “conscious” and “consistent” with the things we hold to be true.



notes...

“Measuring Worldview”

Lesson #5

V. An integrated worldview must satisfy the deepest longings of a person’s heart.

- A. The evolutionary equation doesn’t deal with love, personality, and many other things that people consider real.

TIME + MATTER + CHANCE + ENERGY = LIFE

- B. God has given each one of us a desire to belong.

VI. The three measures of an integrated worldview allow us to recognize gaps in other worldviews, and to be an influence to others.

listen
to learn

What are the three components of an integrated worldview.

principle
endeavours

Understanding the components of an integrated worldview will position us to better present the reality of the Christian worldview to others.



ASSIGNMENT SECTION

“Measuring Worldview” Lesson #5

listening test

1. _____ is an example of a worldview that is not consistent within itself.
2. An integrated worldview must be able to answer the basic questions of life. • TRUE or FALSE
3. God has given each one of us a desire to _____.
4. The evolutionary equation is an unsatisfactory explanation of reality as it fails to handle all the data. • TRUE or FALSE
5. An integrated worldview need not fulfill all three components. • TRUE or FALSE

Question #1:

In your own words explain the three components of an integrated worldview?

Question #2:

What is the weakness of not having a worldview that is consistent within itself.

make it real - exercise

Take time to consider and write down your personal testimony as to how the Christian worldview satisfies your deepest longings. Consider how you might present this to a non-believer.

Question #3:

In what ways is the Christian worldview successful in handling all the data?

memory verse

“So, likewise, whoever of you does not forsake all that he has cannot be My disciple.” —Luke 14:33 (NKJV)

Question #4:

In what ways can you give yourself to the process of developing an integrated worldview? Why is this an important process?

“Paradigms” Lesson #6

case study

You have been asked by the youth pastor of your local church to organize and lead the church youth group in some form of project that will serve the local community. You must first identify a need, and then work to compile a list of questions and approaches as to how you might meet that need effectively and according to biblical principles.

questions

1. How will you go about identifying a need in your local community?
2. Compile a list of questions?
3. Identify the tools that will assist you in meeting the need in question. (Do not be restricted in your thinking to physical tools.)

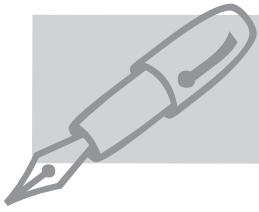


LESSON FOCUS

THIS LESSON WILL FOCUS ON THE DISTINCTION BETWEEN PRESUPPOSITIONS AND PARADIGMS, AS WELL AS THE IMPORTANCE OF PARADIGMS RELATIVE TO PROBLEM-SOLVING.

This lesson is important because...

Paradigms are tools that will help us to be more effective problem-solvers and to better engage in the battle for the hearts and minds of men and women in our culture.



notes...

“Paradigms” Lesson #6

- I. Colossians 1:13-14
 - A. We have been transferred from one kingdom to another kingdom. This change takes place initially in the heart.
 - B. The Kingdom is the goal and focus of our efforts (Matthew 6:33).

- II. Paradigms are an important tool for us in the battle for the hearts and minds of men.
 - A. Paradigms help us work within the scope of our reality to accomplish things.
 - B. Paradigm defined; A pattern, example, or model; paradigms have defined structures and parameters.

- III. Paradigms are tools that address and help us solve problems effectively.
 - A. Paradigms eliminate options.
 - B. Paradigms focus our efforts.
 - C. Paradigms reinforce our thinking.

- IV. Presuppositions determine what you believe (heart choices), while paradigms are based upon those beliefs in a context of problem-solving.

ABOUT THE SPEAKER

ADAM

PEACOCKE

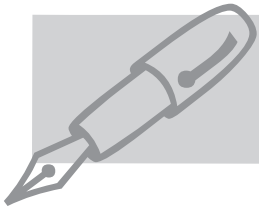
is the pastor of City Life Fellowship and serves



on the advisory board of Strategic Life Training. He has a degree in history from UCLA. Adam resides in Santa Rosa, CA with his wife, Joanne, and their four children.

make
your case

How does an understanding of paradigms help us to better engage in the battle for the hearts and minds of men and women in the culture?



notes...

“Paradigms” Lesson #6

- V. 1 Corinthians 1:20-25
- A. God transcended the paradigms of these cultures in order to get to the hearts of people.
 - B. God sent Christ in a way that superceded the paradigms, thoughts, and structures of men in a way that reveals those who didn't have a heart for God.
- VI. Jesus loved to challenge people's paradigms.
- A. Jesus wanted to free people from bondage (John 10:10).
 - B. Paradigms are tools that help us go to the next level, but they can become idols that restrict our growth.
 - C. The example of Jesus (Mark 6:30-50).
 - 1. Feeding the 5,000 transcended their paradigm relative to God's ability to provide. It strengthened their belief as to who God is.
 - 2. Jesus challenged the people's paradigm relative to what the Messiah and His Kingdom would look like.
 - 3. By walking on the water and calming the storm, Jesus challenged the disciples' paradigm relative to how we interact with the physical world around us.


define a term

STRUCTURE

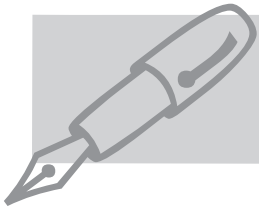
the arrangement or interrelation of all parts of a whole; manner or organization or construction.

(Webster's 1828)

link to a past lesson



An integrated
worldview is one
that is consistent
within itself.



notes...

“Paradigms” Lesson #6

VII. Working with paradigms.

- A. Paradigms are not negative. Although they can limit growth, they are also incredible tools for expanding our perspective, therefore encouraging growth.
- B. Paradigms help to reinforce the heart beliefs that we have.
- C. We can shift paradigms. This means to put aside what no longer serves us. However, this requires us to grab hold of another.
- D. There are three things that accommodate a paradigm shift.
 - 1. Extreme pressure.
 - 2. The time to be creative.
 - 3. Asking the right questions.

listen to learn

What were the expectations of the people relative to their belief that Jesus was the awaited Messiah?

principle endeavours

To be equipped with the tools of the mind in order to be able to get to the heart.



ASSIGNMENT SECTION

“Paradigms” Lesson #6

listening test

1. _____ are something that everyone has in common.
2. The goal of our influence should be to extend the King’s purposes in the earth. • TRUE or FALSE
3. Often the most powerful paradigms we face are those of _____.
4. Jesus’ goal in messing with people’s paradigms was to get to their hearts. True or False
5. Paradigms are able to focus our _____.

Question #1:

Explain the distinction between a presupposition and a paradigm.

Question #2:

How is the distinction between convincing and conviction a good example of how paradigms operate?

Question #3:

In what ways did Jesus challenge the paradigms of the people to whom He communicated?

Question #4:

Identify and explain the three things that help facilitate a paradigm shift.

make it real - exercise

We use paradigms to help us learn. These are the tools that foster growth in knowledge, memory, and aptitude. Identify some learning paradigms. Can you think of a paradigm shift you have had in this area?

memory verse

“He has delivered us from the power of darkness and conveyed us into the kingdom of the Son of His love, in whom we have redemption through His blood, the forgiveness of sins.” —Colossians 1:13-14 (NKJV)

“Worldview and Government”

Lesson #7

case study

You are talking about God with a close friend who is a non-Christian. Your friend makes the statement, “I believe there is a God out there somewhere. My problem is that Christianity seems so disconnected from day-to-day life. How does Christianity answer the massive social problems faced in this nation today? How is going to church going to help those who are struggling with poverty and unemployment?”

questions

1. How would you answer your friend’s question?
2. What are some aspects of life and the culture that you wonder if the Bible actually addresses?

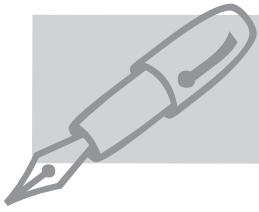


LESSON FOCUS

THIS LESSON WILL FOCUS ON THE CHRISTIAN PERSPECTIVE OF GOVERNMENT. IN IT WE WILL EXAMINE THE FIVE AREAS OF GOVERNMENT IDENTIFIED IN THE SCRIPTURES AS WELL AS SOME OF THE LIMITATIONS OF EACH.

This lesson is important because...

To effectively serve our communities, we need to have a clear understanding of the role of government in fulfilling Christ’s commission to disciple the nations.



notes...

“Worldview and Government”

Lesson #7

- I. Government is about leadership and responsibility.
- II. God has placed limitations on man from the outset.
 - A. God is sovereign. Man is not.
 - B. Why does God place limitations on us?
 1. Dependence vs. independence
 2. “My grace is sufficient for you, for My strength is made perfect in weakness” (2 Corinthians 12:9).
 3. Our limitations reveal our need for community.
 4. Government helps to define our function.
 5. Mankind is fallen (total depravity).
- III. The nature of government defined.
 - A. Government may be defined as “the lines of authority established by God that give us the ability to fulfill our destiny in an orderly fashion.”
 - B. Godly government produces love, peace, and security (Isaiah 9:7).
 - C. Government allows us to experience the life of God.
 - D. Government helps us to find our place.

ABOUT THE SPEAKER

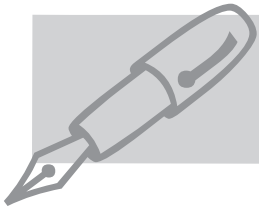
MARK WILSON is the former assistant director of Strategic Life Train-



ing, a ministry designed to train young Christians to lead their generation. He has a degree in history and a degree in law from The University of Auckland, New Zealand. Mark currently works in real estate and resides in New Zealand with his wife, Emma, and their two children.

make
your case

Does the Bible have anything to say about taxation? What principles found in scripture might speak to this issue?



notes...

“Worldview and Government”

Lesson #7

IV. The Trinity is the perfect model for how government should function.

- A. All government resides in God (John 19:11).
- B. There are different functions within the godhead.
- C. The creation story

V. The separation of power through government structures (Five spheres of government).

- A. Three major structures of government as revealed in scripture.
 - 1. Family government
 - 2. Church government
 - 3. Civil government
- B. Two additional spheres of government which must be understood, as revealed in scripture, in order to effectively disciple a nation.
 - 1. Self-government
 - 2. Commercial government

VI. Five spheres of government explained

- A. Self-government

define a term

LIMITATION

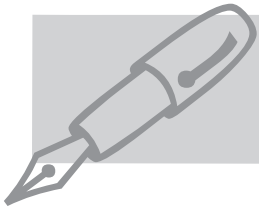
something that limits; as some factor in a person's make-up which restricts the scope of his activity or accomplishment; qualification.

(Webster's 1828)

link to a past lesson



A legitimate worldview must be able to satisfy your deepest longings.



notes...

“Worldview and Government”

Lesson #7

- B. Family government
- C. Church government
 - 1. Apostles and prophets are to be the authority within the sphere of church government.
 - 2. The local church is the primary equipping center for effective Christian service.
- D. Commercial government
 - 1. The stewardship of private property is essential to personal and social maturity. See the parable of the talents.
 - 2. The problem of “dualism.”
- E. Civil government (biblically defined in the Old Testament).

VII. Tyranny within the five spheres of government

- A. Tyranny occurs when one sphere of government superimposes its authority on another sphere and limits that sphere’s ability to function.
- B. Examples of tyranny

VIII. Transformation and government

listen to learn

What is the fruit of godly government in a community?

principle endeavours

The government of God begins first in our hearts and then extends outward into all areas of life.



ASSIGNMENT SECTION

“Worldview and Government” Lesson #7

listening test

1. God has placed _____ on mankind from the beginning.
2. As Christians, we need not concern ourselves with issues related to civil government. • TRUE or FALSE
3. Government and authority help us to define our _____.
4. Government allows us to have an increased ability to fulfill our destiny. • TRUE or FALSE
5. _____ takes place from the inside-out and the bottom-up.

Question #1:

What is our model for the functioning of a healthy government?

Question #2:

How does the present Western culture respond to the issue of government and authority?

Question #3:

What are some examples of tyranny in society today? What might we do to see the restoration of godly government in these areas?

Question #4:

Identify the five spheres of government and under each identify an issue of primary responsibility for that sphere.

make it real - exercise

Consider some examples from your own life where you have seen government and authority as a servant to your destiny. Take the time to prayer for those who have had a place of authority in your life.

memory verse

“Let every soul be subject to the governing authorities. For there is no authority except from God, and the authorities that exist are appointed by God. Therefore whoever resists the authority resists the ordinance of God, and those who resist will bring judgment on themselves.” —Romans 13:1-2 (NKJV)

“Embracing a New Perspective of Christian Worldview”

Lesson #8

case study

In discussing your faith with a friend, she challenges your belief in the Bible as an authority in the way you should live. “The Bible is so irrelevant to modern life. How can I possibly look to it to guide me? Tell me, what does the Bible have to say about the Internet?”

questions

1. Answer your friend’s question.
2. What are some areas of modern life that you wonder if the Bible actually addresses?

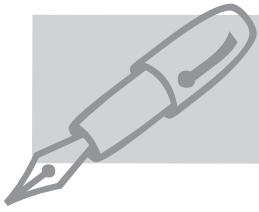


LESSON FOCUS

THIS LESSON WILL FOCUS UPON THE GOALS AND MOTIVATIONS WITH WHICH WE SHOULD APPROACH BUILDING A CHRISTIAN WORLDVIEW.

This lesson is important because...

The way that you approach any significant endeavor, such as building a Christian worldview, will greatly shape what you will get from it.



notes...

“Embracing a New Perspective of Christian Worldview”

Lesson #8

- I. Developing the ability to use our Christian worldview

- II. Four “handles” to help you grab hold of a Christian worldview:
 - A. Learning what we believe, and why we believe it
 - 1. There is a great need in the Body of Christ for learning what we are to believe as Christians.

 - 2. Learning what to believe is good, but is insufficient without an understanding of why we believe it.

 - B. Living by design, rather than by default

ABOUT THE SPEAKER

ADAM

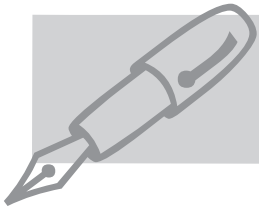
PEACOCKE

is the pastor of City Life Fellowship and serves on the advisory board of Strategic Life Training. He has a degree in history from UCLA. Adam resides in Santa Rosa, CA with his wife, Joanne, and their four children.



make
your
case

Is knowing what
the Bible says
about the Internet
important?
Why?



notes...

“Embracing a New Perspective of Christian Worldview”

Lesson #8

- C. Becoming a prophetic voice to your culture, rather than a product of your culture
- D. Add weapon to your witness.

define a term

DESIGN

Purpose; intention; aim;
implying a scheme or plan
in the mind

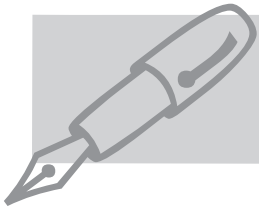
(Webster’s 1828)

III. The example of David and Goliath: 1 Samuel 17:4-51

- A. (Vs. 4-11; 20-30) David was looking at the situation with Goliath through different lenses than the rest of the Israelites because of what he believed.
- B. (Vs. 31-40) David was ready for a confrontation with Goliath because he had been living his life by design.

link to a past lesson

Our heart beliefs
are the most
significant influence
in our lives.



notes...

“Embracing a New Perspective of Christian Worldview” Lesson #8

- C. (Vs. 31-40) David was bold in sharing his faith and, thus, became a prophetic voice to the people of Israel.

- D. (Vs. 41-51) David acted as a weapon for God against Goliath.
 - 1. As a witness to the Philistines and surrounding nations that there is a God in Israel.

 - 2. As a testimony to Israel that God does not deliver by sword or spear, but that the battle is the Lord's.

listen
to learn

What “way” have you embraced for the process of maturing in Christ?

principle
endeavours

All godly transformation begins on the inside and works its way out.



ASSIGNMENT SECTION

“Embracing a New Perspective of Christian Worldview”

Lesson #8

listening test

1. Everybody lives either by design or _____.
2. You do not have a worldview until you consciously choose what you believe. • TRUE or FALSE
3. The fruit of David looking through the lenses of faith was a life of _____.
4. David defeated Goliath as a result of a spiritual, emotional response to Goliath’s taunting. • TRUE or FALSE
5. Big words are a waste of time to learn, unless you want to impress people. • TRUE or FALSE

Question #1:

Why is knowing what you believe insufficient for building a strong, Christian worldview?

Question #2:

Name an area of your life in which you feel you are living by design.

Question #3:

In what situation or issue would you like to become a prophetic voice to our culture? What differing perspective do you want to bring?

Question #4:

In what area have you found yourself looking through the lenses of the culture around you?

make it real - exercise

Make a list of things that you believe need to happen so you will become effective as a prophetic voice in the field you answered for question number three. Begin to pray specifically that God would strengthen you and give you opportunity in this area.

memory verse

For the weapons of our warfare are not carnal but mighty in God for pulling down strongholds, casting down arguments and every high thing that exalts itself against the knowledge of God, bringing every thought into captivity to the obedience of Christ, and being ready to punish all disobedience when your obedience is fulfilled. Do you look at things according to the outward appearance? If anyone is convinced in himself that he is Christ’s, let him again consider this in himself, that just as he is Christ’s, even so we are Christ’s.”

—2 Corinthians 10:4–7 (NKJV)